

A large, metallic, 3D '@' symbol is the central focus, resting on a document with a table of data. The symbol is highly reflective and has a thick, rounded design. The document below it is out of focus, showing a grid of numbers and text. The background is a soft, light blue gradient.

ARSnet
BusinessSoftware

iBOS

BusinessProfile 2.0

Retrieve current, correct and complete
Information in real-time

Information Management

Due to composite applications companies can improve the use and value of classic applications like IBM Lotus Notes / Domino Server or Microsoft Office. The Internet Business Office Services (iBOS) take over the management of information in a Service-Orientated Architecture (SOA).

Ready for SOA?

The concept of Service-Orientated Architecture is the ideal Infrastructure to reasonably connect and combine application components. As a matter of fact it is nothing new, but it is revolutionary in its possibilities. The Lotus Domino WebServices provide the data and functions needed for ongoing tasks. The Add-Ins Module iBOS 2.0 displays everything on an easily operated user interface. The biggest advantage of Service-Orientated Applications is the fact that they cannot only be used inside the company but rather provide it as service for network associates.



Knowledge Management:
das Rad verbessern, statt neu erfinden

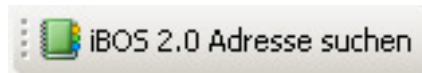
Improving the Wheel

The availability of information is of crucial importance for dealing with central business challenges. Among them are the improvement of business process, the fulfillment of customer expectations and the increase of employee productivity.

The **ARSnet iBOS BusinessProfile 2.0** is based on an IBM Lotus Domino On Demand Business **Database** with XML extension for WebServices and a search form for Microsoft Office. The Word **Add-Ins Module** processes XML data in a way that no further libraries are needed on the workstation. While booting MS Word the pushbutton loads automatically (see below).

Features and Advantages

- You work directly with MS Word without leaving the application
- Low amount of maintenance by central administration of basic data.
- The module works efficiently by reducing data transfer. The Lotus Domino Server first sorts the data before the module sends it.
- The Domino database has all features of a modern database. (indexes, fast search, XML, browser ability)
- A high level of automation provides fast and effective performance with real-time operations.
- Ready-made drafts for letters, serial letters and labels with the ability to handle the form of address in different situations.
- Suitable for Lotus Domino 6.5 and Office XP or higher.
- Security settings for Proxy and https
- Creation of reports and lists



Lotus Notes Tile (above)

Form for new documents and configurations respectively structured team perspective (right) in Lotus Notes or a Web Browser

The screenshot displays the ARSnet iBOS BusinessProfile web application. At the top, it shows the ARSnet logo and navigation links for Groupware, SmartEdit, and Datenbanksetup. Below this is a search bar with a search button and a 'Suchen' button. The main content area shows a list of documents with columns for '#', 'Status', and 'Thema'. The list includes items like 'Amter - Gremien-Liste', 'Aufgaben- Geschäftsbereiche-Liste', 'BusinessProfil', 'Institut * Firma', 'Jubiläen', 'Kontakte', 'Verteiler', and 'Verwaltung'. A sidebar on the left contains navigation options: Team (Struktur, Formulare), Persönlich (Formulare), and Spezial (Index, Papierkorb). A browser window is overlaid on the main content, showing the same interface.

iBOS 2.0

Konfigurationsparameter für Serververbindung

URLPrefix: ' fuer SSL https://
 URLHost: ' fuer iBOS localhost
 URLDBPfad: ' DB Pfad + DB Name + .nsf
 ProxyUser:
 ProxyPasswort:
 HTTPSUser:
 HTTPSPasswort:

Login-settings

are encrypted and saved in iBOS-template (right).
 Login input mask (below)

Retrieve current, correct and complete information in real-time:

Addresses from:

- Domino directory
- iBOS database

Search data in iBOS database by displaying different categories:

Creation of schedules of persons, companies or mailing lists for serial letters:

iBOS Liste speichern

with displaying of transfer status

.: Übersicht .:

Firma	Person
ARSnet BusinessSoftware	Development, ARSnet
Strasse / Nr.: Zecklstr. 72	Anrede: Herr
Postleitzahl / Ort: 85053	Akad. Titel:
Land: Deutschland	Adelstitel:
Position:	Nachname: Development
Funktion:	Namenszusatz:
Abteilung:	Vorname: ARSnet
Beschreibung:	Anschrift: Institut * Amt * Firma

Die mit * gekennzeichneten Felder sind Pflichtfelder.

.: Korrespondenz .:

Anschrift:	Institut * Amt * Firma	Andere
Strasse / Nr.: Zecklstr. 72		Strasse / Nr.:
Postleitzahl / Ort: 85053		Postleitzahl / Ort:
Land: Deutschland		Land:
Internet		Telekommunikation
e-mail Adresse:		Telefon:
Homepage:		Fax:
		Handy:
Briefanrede		Verteiler

.: BusinessProfil .:

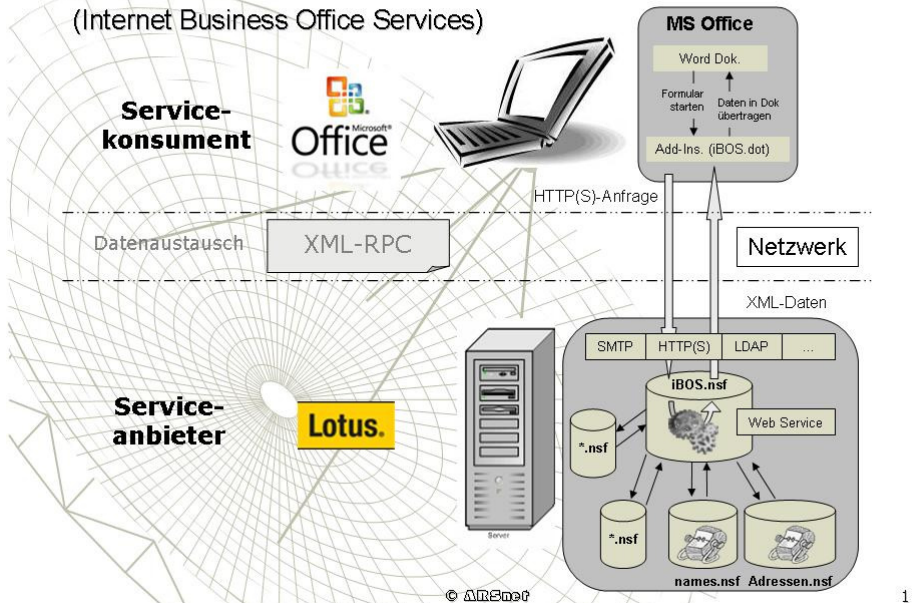
- ☐ **Ämter**
Amt - 01 -> Development, ARSnet [v. 14.01.2008 - b. 15.01.2008]
- ☐ **Aufgaben**
Aufgabe - 02 -> Development, ARSnet
- ☐ **Geschäftsbereiche**
Geschäftsbereich - 02 -> Development, ARSnet
- ☐ **Gremien**
Gremium - 03 -> Development, ARSnet

.: Jubiläen .:

Person:	16	Nächstes Jubiläum:
Nächster Geb.:	50. Geburtstag ->	50. Geburtstag ->
Nächstes D.-Jub:	25jähriges Dienstjubiläum ->	
Firma:		Nächstes Jubiläum:
Gründungsdatum:	16	Jahre ->

iBOS 2.0

(Internet Business Office Services)



Information in contact

- overview
 - with company or without
- correspondence
 - address
 - different address
 - form of address, mailing list
- business profile
 - agency, duties
 - field, panel
- anniversaries
 - person, company

Information as Service

If information should be available on demand, you need a new information strategy. Up to now applications were closely connected to special repositories what isolated data and strongly limited its value and benefit. Now technologies for Service-Orientated Architecture (SOA) and open industry standards like XML, JSR 170 and xQuery are available. This enables companies to implement information as service in network so that every user has real-time access to processes and applications. With on demand information isolated date becomes free accessible in form of a new service layer which can be used throughout the whole company. .

(source IBM 2005)

Kontakt

ARSnet, BusinessSoftware
 Alexander Robert SKURKA
 Zecklstr. 72
 D-85053 Ingolstadt
 Deutschland
 +49 (0)171 – 64 77 185
 support@arsnet.de
 www.arsnet.eu

IBM, das IBM Logo und Lotus sind eingetragene Marken der IBM Corporation. On Demand Business und das On Demand Business Logo sind Marken der IBM Corporation in den USA und/oder anderen Ländern.

Rational und WebSphere sind Marken der IBM Corporation in den USA und/oder anderen Ländern.

Java und alle Java-basierenden Marken sind Marken von Sun Microsystems, Inc. in den USA und/oder anderen Ländern.

Microsoft ist eine Marke der Microsoft Corporation in den USA und/oder anderen Ländern.

Weitere Unternehmens-, Produkt- oder Servicennamen können Marken anderer Hersteller sein